

Yaesu FT-991 FLDIGI Digital Configuration

Ron Standley WR7ON

11-14-2016

This configuration reflects my implementation of the Yaesu FT-991 transceiver with the digital applications FLDIGI and EasyPal. This configuration has been tested with these two applications only, other CAT applications may, and probably will, require changes.

This configuration applies to FM operation, and has only been tested on the 2M/440 bands.

Your mileage may vary.



HARDWARE CONFIGURATION

Hardware Used

- Yaesu FT-991 transceiver
- 11" MacBook Air (late 2012 version, 1.3ghz Intel Core i5, 4gb memory, 128gb SSD)
- USB A-male to B-male cable

Software Used

- Boot Camp
- Windows 10
- FLDIGI, FLAMP, FLMSG, FLWRAP

FT-991 Menu Settings

#029 BAUD RATE	38400
#031 CAT RATE	38400
#032 CAT TOT	10ms
#075 FM OUT LEVEL	80

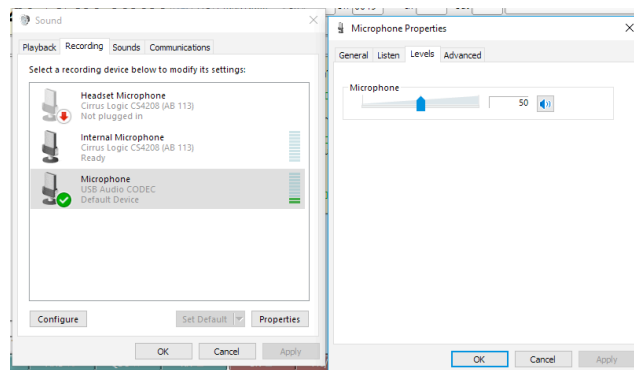
INPUT and OUTPUT AUDIO LEVEL ADJUSTMENT

Audio Level From FT-991 To PC

FT-991 menu #075 controls the audio level to the PC.

The PC Microphone level adjustment controls the input audio level into the PC.

Either/both control will adjust the final level of audio signal at FLDIGI.



Audio Level From The PC to FT-991

The level of audio from the PC to FT-991 can be controlled by the PC speaker control, lower right PC taskbar.

Yaesu FT-991 FLDIGI Digital Configuration

Ron Standley WR7ON

11-14-2016

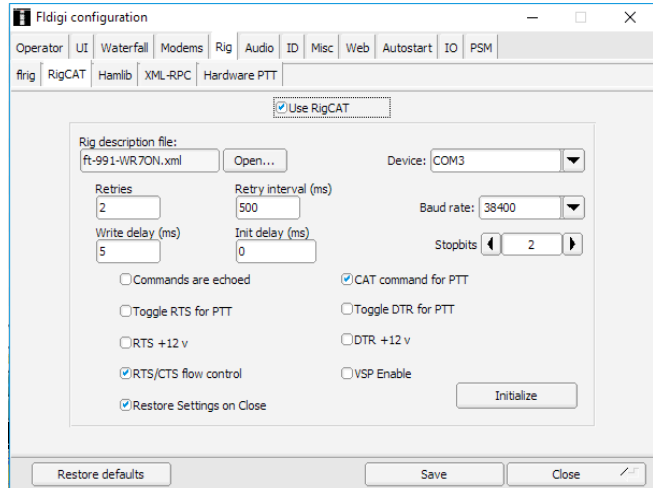
FLDIGI CONFIGURATION

Configure → Rig control → Rig → RigCAT

Settings as shown in the figure. In addition, modify or select a FT-991 rig xml file (Ex. FT-991.xml, available on the web) containing the following changes to the PTTON and PTTOFF commands.

```
...
-<COMMAND>
<SYMBOL>PTTON</SYMBOL>
<SIZE>11</SIZE>
<STRING>EX0741;TX1;</STRING>
</COMMAND>

-<COMMAND>
<SYMBOL>PTTOFF</SYMBOL>
<SIZE>11</SIZE>
<STRING>TX0;EX0740;</STRING>
</COMMAND>
...
```

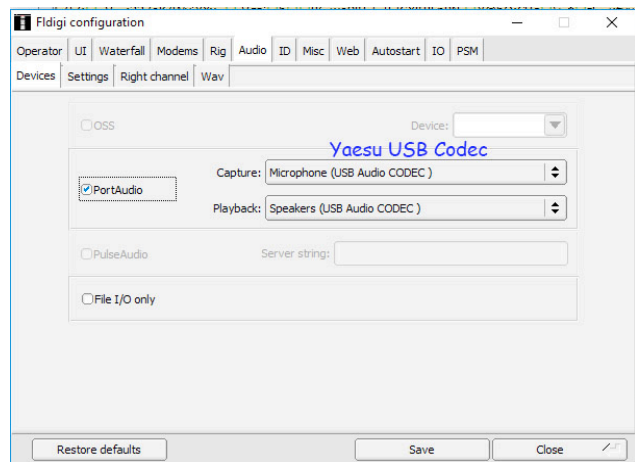


The Device: com port is the Enhanced port.

Configure → Rig control → Audio → Devices

PortAudio checked

Select the YAESU enhanced USB Audio CODEC for Capture and Playback.



Configure → Rig control → ID → Video

Transmit video text checked
Text: your call, uppercase
Chars/row: number of characters in your call



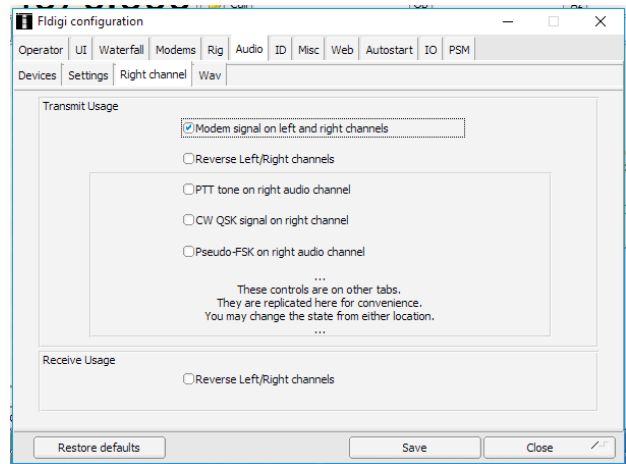
Yaesu FT-991 FLDIGI Digital Configuration

Ron Standley WR7ON

11-14-2016

Configure → Rig control → Audio → Right channel

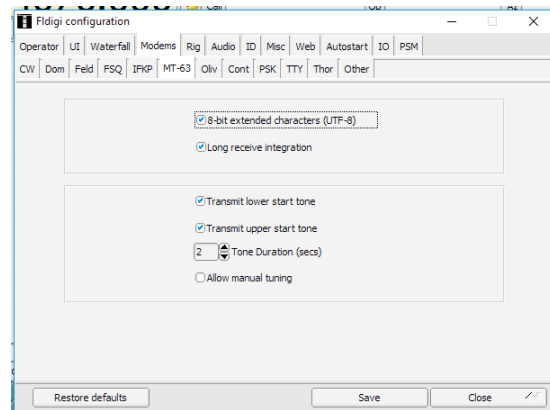
Modem signal on left and right channels checked



Configure → Modems → Modems → MT63

The following fields are checked.

- 8 bit extended characters
- Long receive integration
- Transmit lower start tone
- Transmit upper start tone
- 2 second tone duration



Configure → Ids → ID → RsID

Pre-signal tone set to 2.0 seconds

