

# Yaesu FT-991 EasyPal Digital Configuration

Ron Standley WR7ON

11-14-2016

This configuration reflects my implementation of the Yaesu FT-991 transceiver with the digital applications FLDIGI and EasyPal. This configuration has been tested with these two applications only, other CAT applications may, and probably will, require changes.

This configuration applies to FM operation, and has only been tested on the 2M/440 bands.

Your mileage may vary.



## HARDWARE CONFIGURATION

### Hardware Used

- Yaesu FT-991 transceiver
- 11" MacBook Air (late 2012 version, 1.3ghz Intel Core i5, 4gb memory, 128gb SSD)
- USB A-male to B-male cable

### Software Used

- Boot Camp
- Windows 10
- EasyPal

### FT-991 Menu Settings

#029 BAUD RATE	38400
#031 CAT RATE	38400
#032 CAT TOT	10ms
#033 CAT RTS	Disable
#075 FM OUT LEVEL	80

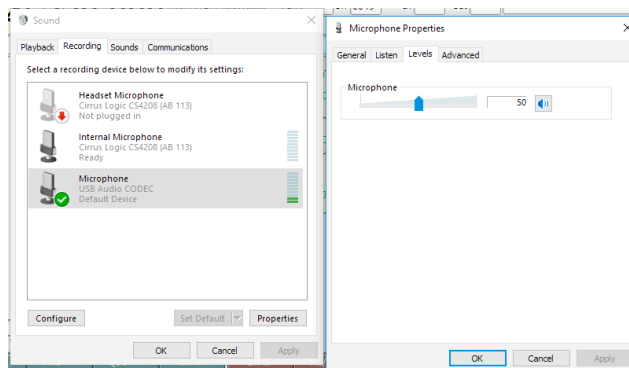
## INPUT and OUTPUT AUDIO LEVEL ADJUSTMENT

### Audio Level From FT-991 To PC

FT-991 menu #075 controls the audio level to the PC.

The PC Microphone level adjustment controls the input audio level into the PC.

Either/both control will adjust the final level of audio signal to EasyPal.



### Audio Level From The PC to FT-991

The level of audio from the PC to FT-991 can be controlled by the PC speaker control, lower right PC taskbar.

# Yaesu FT-991 EasyPal Digital Configuration

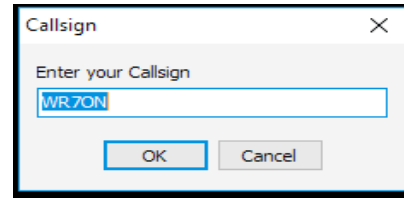
Ron Standley WR7ON

11-14-2016

## EasyPal CONFIGURATION

Setup → C/S Soundcard-PTT → Callsign

Enter your callsign



Setup → C/S Soundcard -PTT → Use CommPort (PTT CAT)

Rig	User Defined
Baud Rate	38400
Data Bits	8
Stop Bits	2
Parity	none

SOUNDCARD button

Select the FT-991 Enhanced codec

Select USB Audio CODEC <<RX

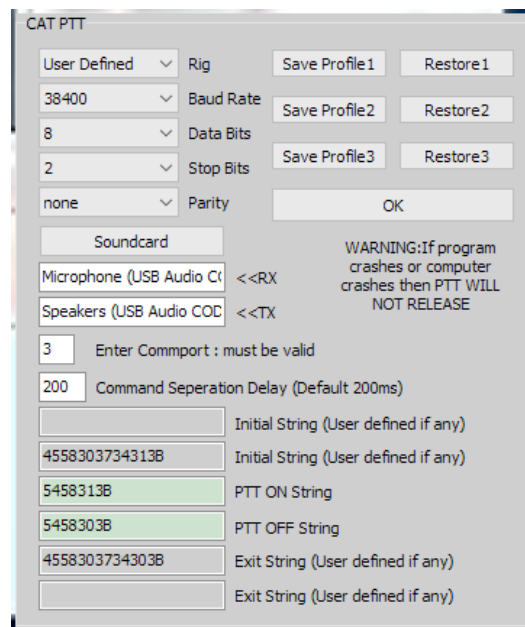
Select USB Audio CODEC <<TX

Enter Commport: Enhanced port number

Command separation delay 200

Enter these strings in the indicated positions.

4558303734313B	Initial String	(EX0741;)
5458313B	PTT ON	(TX1;)
5458303B	PTT OFF	(TX0;)
4558303734303B	Exit String	(EX0740;)

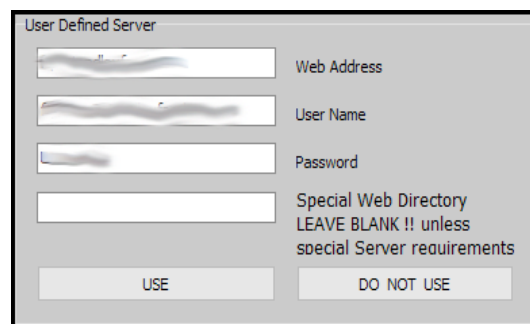


Hybrid → User Defined Server

Enter the host (web address), username and password of the FTP server and account to be used.

Values entered will be used to upload the TX file to this server, and pass this information in the data stream to the recipients.

Each receiving station will login and download the TX file.



Other configuration items may be required, depending on local implementation.

**NOTE:** PTT will not be released if EasyPal terminates without completing transmission or Abort command.